



2018-2019

5778-5779

Jewish Federation of Metropolitan Detroit

ANNUAL REPORT

HERE FOR
GOOD

2018-2019 Federation and Foundation Executive Committees



2018-2019 JFMD Executive Committee

Beverly Liss	President
Michael Eizelman	Vice-President
Lee Hurwitz	Vice-President
Ronald A. Klein	Vice-President
Lawrence S. Lax	Vice-President
Joshua F. Opperer	Vice-President
Jeff Schlussel	Vice-President
James L. Bellinson	Treasurer
Lisa I. Lis	Secretary
Scott Kaufman	Executive Secretary
Darren Findling	At-Large
Kristen Gross	At-Large
Martin B. Maddin	At-Large

Ex-Officio Members

Robert Gordon	Ryan Landau
Betsy Heuer	Matt Lester
Alan J. Kaufman	Gary Torgow
Sue Ellen Kaufman	Lawrence Wolfe
Robert Kleiman	

2018-19 UJF Executive Committee

Alan J. Kaufman	President
Dennis Bernard	Vice-President
Scott Eisenberg	Vice-President
Ralph Gerson	Vice-President
Warren Rose	Vice-President
Karen Sosnick Schoenberg	Vice-President
Alan Zekelman	Vice-President
Gregg Orley	Treasurer
Scott Kaufman	Secretary
Michael Berger	At-Large
Paula Goldman-Spinner	At-Large

Ex-Officio Members

Beverly Liss
Laurence Tisdale
Bernard Kent



HERE FOR GOOD

Hineni.

I am Here.

The simple statement is more than just an acknowledgement of our presence.

Hineni is the response given by both Abraham and Moses when called by G-d, signifying their absolute devotion and willingness to be of service, their readiness to be transformed.

As we look back over the accomplishments of the past year, we are reminded that the notion of *Hineni* today remains no less essential to the Jewish people. Our values are built upon a foundation of commitment, responsibility and active participation. When we stand with our fellow Jews in community, when we support those in need and when we give, we are declaring that we are here for each other and for our community.

Hineni is central to the mission of the Jewish Federation of Metropolitan Detroit. We are here to serve and support the members of our community and to build a vibrant Jewish future for all, in Detroit, in Israel and around the world.

We are here to heal the world and to make a positive difference in the lives we touch.

We are **Here for Good**.

Beverly Liss

Beverly B. Liss

President
Jewish Federation of Metropolitan Detroit

Alan J. Kaufman

Alan Jay Kaufman

President
United Jewish Foundation of Metropolitan Detroit

Scott Kaufman

Scott Kaufman

Chief Executive Officer
Jewish Federation of Metropolitan Detroit

PROJECTED CAMPAIGN ACHIEVEMENT

2019 Annual Campaign	\$33,900,000
2019 Lisa & Gary Shiffman Challenge Fund	2,869,608
Shrinkage Allowance	(882,500)
Prior Year's Over Achievement	600,000

Total Projected Campaign Achievement	\$36,487,108
---	---------------------

ALLOCATIONS

Israel & Overseas

JAFI/JDC/ORT Core Support	\$6,995,130
Elective Programs/Challenge Fund Grants	1,330,000
JFMD Israel and Overseas Services	509,840
Donor Designations	283,521

Total - Israel & Overseas	\$9,118,491
--------------------------------------	--------------------

Local Agencies and Programs

JEWISH EDUCATION & IDENTITY

Farber Hebrew Day School	\$ 444,829
Hillel Day School	652,566
Yeshiva Beth Yehudah	915,229
Yeshiva Gedolah of Greater Detroit	106,488
Yeshivas Darchei Torah	320,265
Day Schools	215,000
Congregational Schools	450,271
BBYO	80,088
Tamarack Camps	617,211
Hillel of Metro Detroit	188,986
MSU Hillel/Michigan Jewish Conference	264,890
HCAM	92,129
University of Michigan Hillel	190,013
Jewish Community Center	1,757,459
JCC Education Department	964,049
Mission Subsidies	110,000

Total - Jewish Education & Identity	\$7,369,473
--	--------------------

COMMUNITY SERVICES

Hebrew Free Loan	\$ 200,973
Hebrew Free Loan (Student Loans)	22,920
Jewish Community Relations Council/AJC	341,983
Jewish Family Service	2,984,347
Jewish Senior Life	643,703
JVS Human Services	1,377,970
In-Home Support Services	18,750
Meals on Wheels (JSL/JFS/NCJW)	40,000
Foundation for Our Jewish Elderly	310,439

Total - Community Services	\$5,941,085
-----------------------------------	--------------------

ADDITIONAL LOCAL SUPPORT

Community Security Program	\$ 567,468
Other Direct Services	556,597
Agency Incentive Grants from Super Sunday	800
Community Development/Engagement	1,019,672
Strategic Planning & Partnerships	417,431
Support Services	1,669,000
Agency Support to Cover Rent for UJF Facilities	4,000,000
Real Estate Centralization Costs	280,000
Campaign Expenses	130,068
Capital Needs Grants	1,200,000
Endowment Fund Matching Grants	1,350,000
Campaign Reserve	450,000
Community Initiatives	833,530

Total - Additional Local Support	\$12,474,566
---	---------------------

Total - Local Agencies and Programs	\$25,785,124
--	---------------------

National Agencies/Central Services

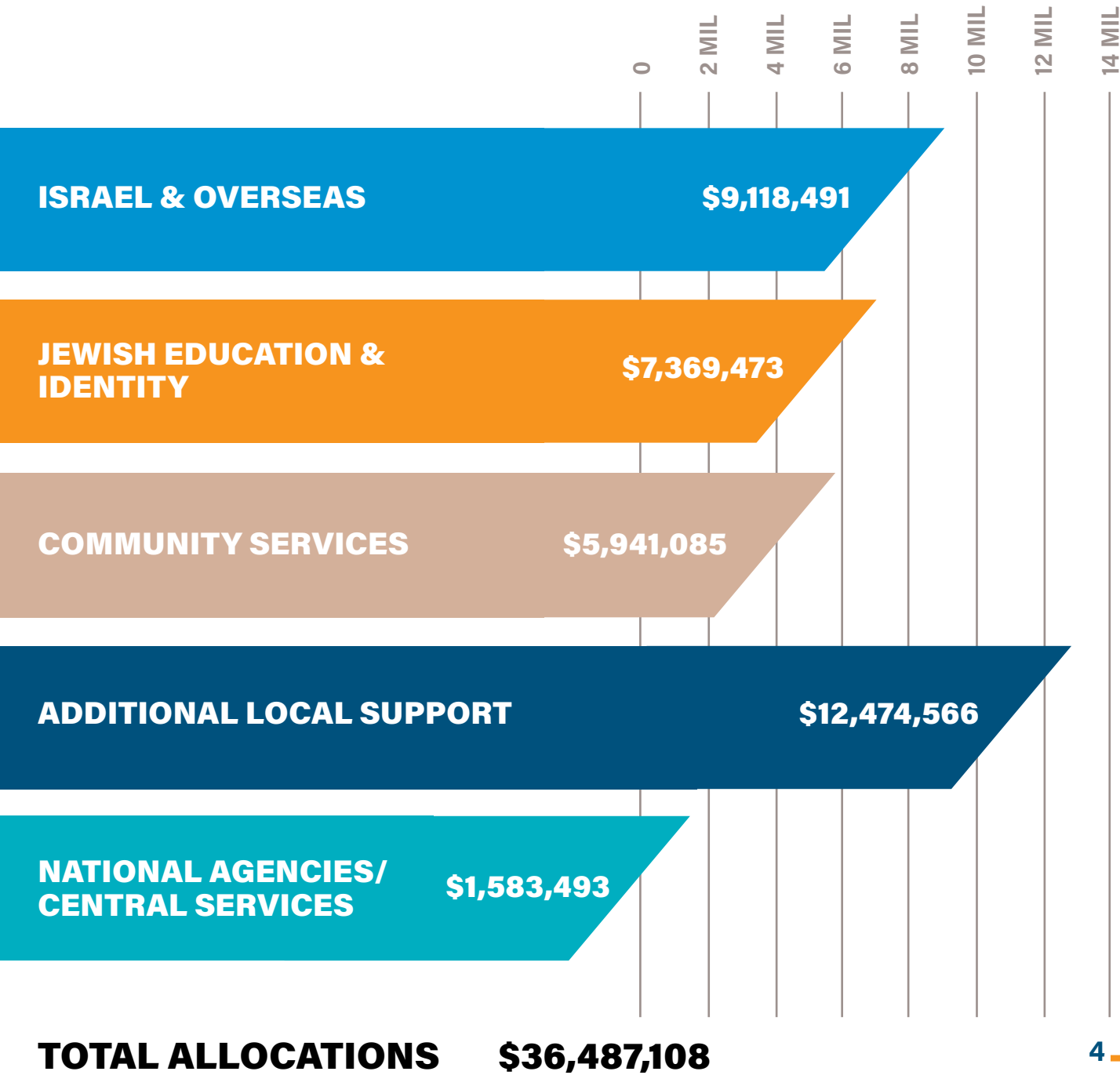
JFNA Dues	\$1,183,432
Birtheright Israel	215,390
70 Faces Media	15,000
Hillel International	43,566
Israel Action Network	34,792
JCC Association of North America	43,021
Jewish Council of Public Affairs	23,292
JFNA Next Generations	
Collective Action Initiative	20,000
Network for Jewish Human Services	5,000

Total - National Agencies/ Central Services	\$1,583,493
--	--------------------

Total - Israel & Overseas, Local Agencies and Programs and National Agencies/ Central Services Allocations	\$36,487,108
---	---------------------

Jewish Federation of Metropolitan Detroit

2019-2020 Allocations: Annual Campaign and Lisa & Gary Shiffman Challenge Fund



Jewish Federation of Metropolitan Detroit

United Jewish Foundation

Support of Agencies

Fiscal Year Ending May 31, 2019

CAMPAIGN SUPPORT						
	ANNUAL CAMPAIGN	CHALLENGE FUND	RENT SUPPORT	TOTAL CAMPAIGN	ENDOWMENT INCOME	
1. BBYO	\$ 68,652	\$ 11,436	\$ 20,349	\$ 100,437	\$ 16,276	
2. FARBER HEBREW DAY SCHOOL	321,165	128,664	241,651	691,480	336,575	
3. FRANKEL JEWISH ACADEMY	-	-	-	-	371,723	
4. FRESH AIR SOCIETY / TAMARACK CAMPS	439,864	192,798	1,150,350	1,783,012	286,750	
5. HEBREW FREE LOAN	130,244	31,449	6,453	168,146	33,770	
6. HILLEL DAY SCHOOL	538,951	116,315	-	655,266	454,310	
7. HILLEL OF METRO DETROIT	150,709	34,477	-	185,186	18,231	
8. MSU HILLEL / MICHIGAN JEWISH CONFERENCE	276,911	48,388	67,084	392,383	83,856	
9. U-M HILLEL	147,310	29,703	106,149	283,162	126,548	
10. JEWISH SENIOR LIFE	440,106	231,097	389,480	1,060,683	1,466,169	
11. JEWISH COMMUNITY CENTER	2,375,363	288,145	1,415,907	4,079,415	1,208,669	
12. JEWISH COMMUNITY RELATIONS COUNCIL / AJC	279,746	54,737	13,140	347,623	4,441	
13. JEWISH FAMILY SERVICES	2,415,745	412,094	174,000	3,001,839	532,542	
14. JVS	1,190,577	179,193	385,436	1,755,206	337,983	
15. YESHIVA BETH YEHUDA	764,084	186,645	30,000	980,729	515,225	
16. YESHIVA GEDOLAH OF GREATER DETROIT	86,891	19,597	-	106,488	47,275	
17. YESHIVAS DARCHEI TORAH	271,078	49,187	-	320,265	146,387	
COMMUNITY-WIDE SECURITY PROGRAM	353,075	-	-	353,075	-	
JEWISH FEDERATION DIRECT PROGRAM SERVICES	5,376,232	1,240,426	-	6,616,658	(1,599,189) ^[1]	
CAPITAL NEEDS GRANTS	1,200,000	-	-	1,200,000	-	
OTHER LOCAL AGENCIES	775,205	76,755	-	851,960	-	
ISRAEL AND OVERSEAS	8,673,824	236,000	-	8,909,824	-	
NATIONAL AGENCIES	1,606,768	4,000	-	1,610,768	-	
	<u>\$27,882,500</u>	<u>\$3,571,106</u>	<u>\$4,000,000</u>	<u>\$35,453,606</u>	<u>\$4,387,541</u>	

Notes:

[1] Reduction of \$1,599,189 relates to the support of the Millennium Fund matches and the Foundation for our Jewish Elderly included in both campaign support and endowment income.

[2] Reduction of \$1,200,000 relates to the capital needs allocations included in both campaign support and capital needs grants.

[5] Other Grants include distributions from the general fund and outside grants facilitated with the assistance of the JFMD grant writers.

Overall Support

While the Annual Campaign remains central to our fundraising efforts, the Jewish Federation and United Jewish Foundation also raise funds from a variety of additional sources. The following represents the support raised and allocated to our local and overseas agencies during the past year (2018-2019).

OTHER SUPPORT									
CENTENNIAL FUND	CAPITAL NEEDS GRANTS	REAL ESTATE CENTRALIZATION GRANTS	CONSTRUCTION PROJECTS	STATE OF MI GRANT	OTHER GRANTS	JWF	DAF GRANTS	TOTAL OTHER SUPPORT	GRAND TOTAL JFMD/UJF SUPPORT
\$ -	\$ -	\$ -	\$ -	\$ -	\$ -	\$ -	\$ 157,320	\$ 173,596	\$ 274,033
33,376	33,843	21,430	774,020	-	46,810	-	78,170	1,324,224	2,015,704
17,094	-	-	-	-	131,000	-	1,722,370	2,242,187	2,242,187
65,746	99,046	84,015	1,796,604	-	-	20,000	152,434	2,504,595	4,287,607
132,473	-	-	-	-	-	-	247,860	414,103	582,249
90,766	507,733	37,006	-	-	-	-	1,221,692	2,311,507	2,966,773
13,171	-	-	-	-	-	5,000	123,365	159,767	344,953
113,171	17,760	3,571	-	-	-	10,000	74,380	302,738	695,121
97,051	80,000	7,519	-	-	-	-	91,485	402,603	685,765
285,415	-	-	-	-	-	-	161,730	1,913,314	2,973,997
163,606	91,549	109,717	99,425	48,758	100,000	45,514	222,444	2,089,682	6,169,097
-	-	-	-	-	-	-	13,212	17,653	365,276
490,433	-	9,868	4,902	1,236,512	-	40,000	284,305	2,598,562	5,600,401
88,733	218,569	37,220	-	1,529,269	-	18,600	23,218	2,253,592	4,008,798
241,511	-	-	-	-	64,500	-	771,532	1,592,768	2,573,497
13,836	-	-	-	-	-	-	-	61,111	167,599
41,667	-	-	-	-	16,755	-	14,660	219,469	539,734
77,090	631,000	-	-	-	-	-	-	708,090	1,061,165
-	-	(280,000)	-	-	-	-	-	(1,879,189)	4,737,469
-	(1,200,000) ^[2]	-	-	-	-	-	-	(1,200,000)	-
-	-	-	-	-	-	-	-	-	851,960
-	-	-	-	-	-	-	-	-	8,909,824
-	-	-	-	-	-	-	-	-	1,610,768
\$1,965,139	\$ 479,500	\$ 30,346	\$2,674,951	\$2,814,539	\$359,065 ^[3]	\$139,114	\$5,360,177	\$18,210,372	\$53,663,978

In Detroit, in Israel and Around the World

Take Care of the
Needs of the
Jewish People

Vulnerable
Populations

Older Adults

Families in Need

Individuals with Disabilities

Underserved Communities

Urgent Needs

School Security

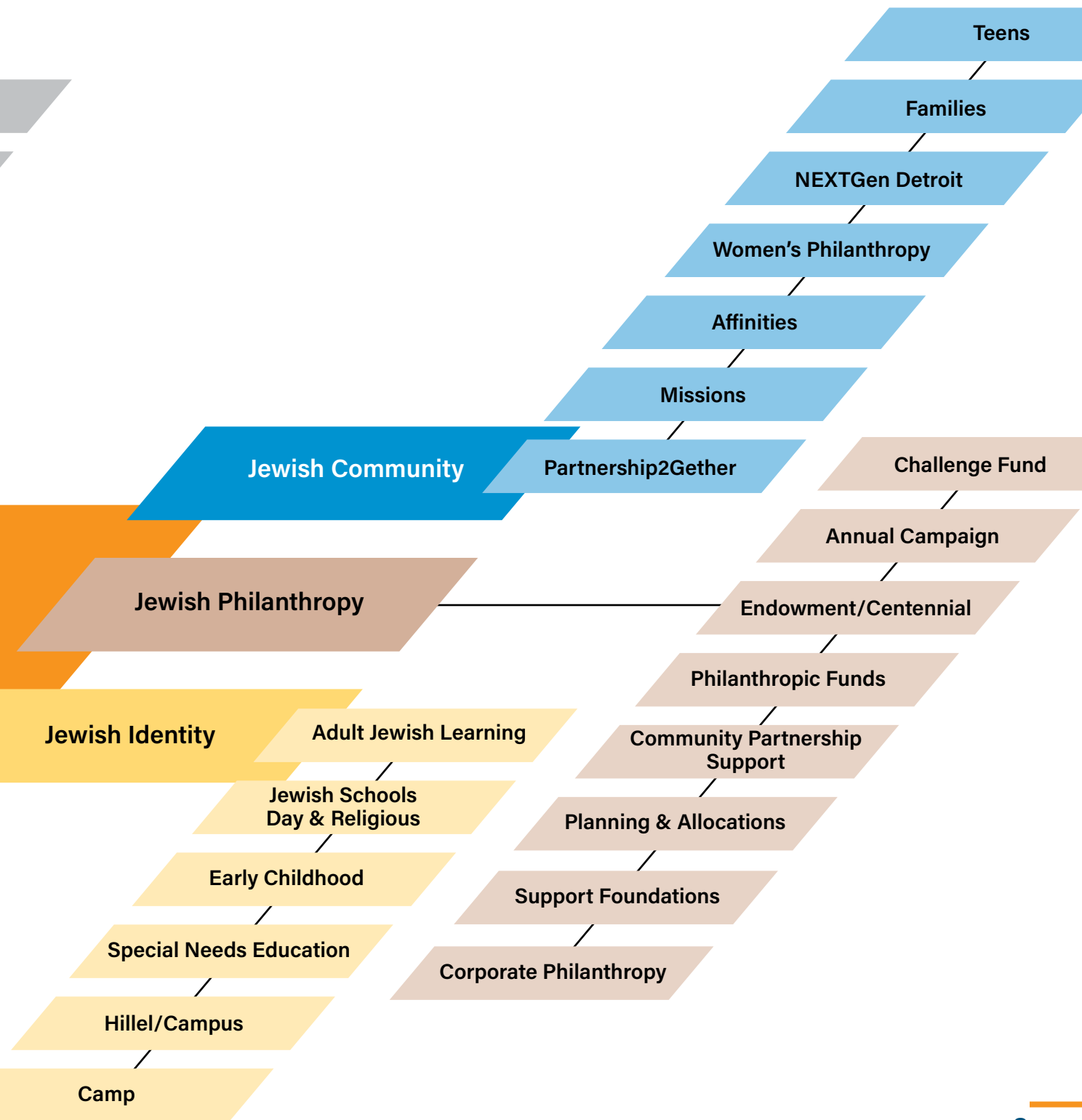
Crisis Management

Community Infrastructure

Aliyah and Absorption

Combating anti-Semitism

Build a Vibrant
Jewish Future



Our Mission

The Jewish Federation of Metropolitan Detroit is the cornerstone of our Jewish community. We are committed to taking care of the needs of the Jewish people and building a vibrant Jewish future in Detroit, in Israel and around the world.

Taking Care of Those in Need

Providing for the well-being of the most vulnerable members of our community is a core value of our Jewish heritage and one of the fundamental aspects of Federation's mission to serve the Jewish community. The range of services offered through our family of partner agencies is extensive, and now includes JHELP, a website and phone number that make it easier for individuals to get the assistance they need and, We Need to Talk, a new program designed to address the crises of anxiety, depression and other mental health issues among young people (see page 14).

Federation also stands ready to respond to disasters and urgent needs as they emerge. We are here to ensure the security and stability of our community, and to take care of those whose lives are affected in times of crisis, whether it means securing emergency resources, coordinating services or responding directly to critical issues.





Building a Vibrant Jewish Future

In addition to taking care of those in need, we also strive to ensure a strong and vibrant Jewish future for our entire community. This encompasses the work of strengthening Jewish identity through all ages and stages of life via Jewish camp and day schools, congregational schools, adult education courses and more. It also means building and sustaining Jewish life here in Detroit, in Israel and throughout the world. Federation remains deeply committed to Jewish engagement and, in particular, has led a revitalization of millennial and 'Gen X' engagement in the Detroit area. Finally, we remain focused on growing Jewish philanthropy through our Annual Campaign, Centennial Fund and a variety of other sources of support that help us secure the long-term future of our community.



Strengthening Jewish Identity

Jewish education and identity are the foundation of a strong Jewish community. Our Jewish values, heritage and culture are shaped through a variety of educational and identity-building outlets that emphasize not just personal growth and learning, but also the central role of community in our religious tradition. The Jewish Federation works to strengthen Jewish identity through its support for our JCC, schools, congregations and agencies, as well as through a variety of direct service programs.

Programs and services include:

- Hebrew Day Schools and Congregational Education Programs
- Adult Jewish Education—including JLearn and Melton at the JCC
- Early Childhood Education
- Special Needs Education—including Opening the Doors at the JCC
- Hillels on Campus
- Jewish Camping Experiences—including Tamarack and JCC camps
- Professional Development for Jewish Educators
- BBYO and other Jewish Youth Group Program Support
- Israel Experiences



2018 2019

Spotlight



Partnership2Gether

Partnership2Gether is a Jewish Agency for Israel (JAFI) program pairing three Michigan communities, Metro Detroit, Ann Arbor and Grand Rapids, with three municipalities in Israel's Central Galilee region, Migdal HaEmek, Nazareth Illit and the Jezreel Valley. Now in its 25th year, the P2G relationship is intricately woven through most of Federation's touchpoints with Israel, infusing our missions and programs with a deeply meaningful "people-to-people" experience that has enriched Jewish lives in Detroit and throughout the partnership region.

Through the years, P2G has connected hundreds of young people and their families in reciprocal visits to both Michigan and Israel. Today, we are more than partners. We are a family.

2018 2019

Spotlight

Federation's Interfaith Affinities program welcomes, embraces and educates interfaith couples and their families within the Metro Detroit area. Programs support and encourage families as they explore how to "do Jewish" in ways that are personally meaningful. Building off the success of the 2016 Nora & Guy Barron Interfaith Mission to Israel, the Interfaith group has been actively programming and developing new and creative ways to engage interfaith couples and families. Plans for this upcoming year of programs include a Havdalah program in downtown Detroit, an interactive Tu B'Shevat Seder, a family night at Jimmy John's Field and a new mission to Israel.

Interfaith Couples Outreach



In response to the growing incidence of depression, anxiety and other mental health issues among young people, the Jewish Federation launched We Need to Talk, a community-wide initiative focused on raising awareness and providing tools and resources for those in need of care. Now in its second year, the goals of the program are to:

- Reduce the stigma associated with youth mental illness.
- Make young Jewish Detroiters comfortable talking about mental illness and more likely to seek help when needed.
- Promote healthier parenting styles that increase youth mental wellness.
- Increase and promote the availability of mental health support services throughout the Jewish community.

By bringing this issue into the light – and telling our stories – we can lift the stigma associated with mental health challenges and begin to address the problems we face as a community. Learn more at wn2t.org.

2018 2019 Spotlight



Building Jewish Community



Supporting and strengthening Jewish community remain at the core of Federation's work. This encompasses both our local community in Metro Detroit—now over 100 years old and still one of the most vibrant to be found anywhere—and our broader Jewish community across the nation, in Israel and throughout the world.

Federation's Community-Building Programs Include:

- **NEXTGen Detroit:** Serving as the hub of a vibrant and dynamic Jewish community for young adults in Metro Detroit, NEXTGen Detroit is the connector for all things young and Jewish.
- **Women's Philanthropy:** For 70 years, Women's Philanthropy has empowered women of all ages through education, volunteerism and fundraising efforts.
- **Affinities:** Custom programming to engage unique demographics and groups within the Detroit Jewish community, such as physicians, 'Gen-Xers' and interfaith couples.
- **Leadership Development:** Dynamic training and educational programs to create and sustain a cadre of community leaders to meet the challenges of today and tomorrow.





Community Security

2018
2019
Spotlight

As the steward of our community, the Jewish Federation remains deeply committed to the security of our Jewish individuals and families. To that end, we allocate close to two million annually to provide for the safety of our schools, agency buildings and Jewish campuses.

Central to this effort is the Federation Community-Wide Security Department, which collaborates closely with our partner agencies and with local and national law-enforcement entities—including the Secure Community Network, a national homeland security organization working on behalf the American Jewish community. A team of highly-trained and experienced officers are stationed at our Jewish Day Schools, camps and campuses. The team also assists Jewish institutions across the community by providing training, consultation, education and advocacy to instill a culture of awareness and safety.



Preserving the Voices of Our Community

As the preeminent repository of Detroit Jewish history, the Leonard N. Simons Jewish Community Archives collects, preserves and makes available the records of our community. Amongst more than two million documents and 25,000 photographs, the oral history collection stands out as a unique window into our past, told by those who lived it.

Always striving to make their collections more accessible, this year the archives launched an oral history website to share its interviews with the world. The result is a fascinating look at how Detroit's Jewish community has grown and changed over the past generation, and illustrates why Detroit is such a vibrant Jewish community.

View the growing oral history collection at jewishdetroit.org/oral-history.

2018
2019
Spotlight



Bill Davidson

Archives

Edythe Jackier



The Centennial Fund: Securing Our Future

2018-2019 was another extraordinary year for Federation's Centennial Fund. To date, there have been 165 commitments totaling close to \$235 million dollars to support the long-term health and security of our community.

The Centennial Fund is the primary endowment fund for securing our community's future and will provide for the welfare and continuity of Jewish life in Detroit for the next one hundred years. With a goal of \$250 million dollars,

this Fund will enable us to provide for our fellow Jews in Detroit, in Israel and throughout the world. It will impact the full range of Jewish needs and experiences, including social welfare, Jewish identity and education, and Jewish life around the world.

Thanks to the support of our generous donors, we have made extraordinary strides and are on track to reach and surpass this ambitious and important goal.

Elaine and Michael Serling



Lisa and Danny Klein

Federation is...

JFMD Affinities Department

We create meaningful touch points for like-minded groups through creative programming for under-engaged community members. This engagement leads to an increased and deeper connection to the community and commitment to Jewish philanthropy.

Farber Hebrew Day School

We provide a Judaic Studies and college preparatory program in a Modern Orthodox, Zionist environment that nurtures personal and intellectual growth, social and moral responsibility and a strong sense of self for each student.



American Jewish Joint Distribution Committee

We are the world's leading Jewish humanitarian assistance organization, working in more than 70 countries and Israel to rescue Jews at risk, to bring relief to Jews in dire need and to renew Jewish community life in areas where it has not been allowed to flourish.

Birthright Israel-Taglit

We seek to increase the annual number of Jews visiting Israel by providing the gift of first-time educational trips to the Holy Land for thousands of mostly unaffiliated Jewish young adults.

BBYO

We shape our community's next generation of leaders by positively impacting the lives of Jewish teens in Metro Detroit, providing them with meaningful Judaic, social justice and leadership development programming.

Jewish Education

We ensure that the local community receives the highest quality Jewish education and identity building services by creating, planning and convening programs and engaging the community and its leadership. The community also offers scholarships to ensure that children who need assistance have access to Jewish education through congregational and/or afternoon Jewish school programs.

Frankel Jewish Academy

We immerse our students in high-caliber academics and Jewish thought and help them develop a passion for arts and athletics. Our graduates move into the world as literate Jews, educated young adults and committed Zionists.

Hebrew Free Loan

We provide Jewish community members with interest-free business, educational and personal loans that help them establish businesses, afford college, cover medical and dental expenses, adopt children, celebrate weddings and handle emergency situations.

Hillel Campus Alliance of Michigan

We provide meaningful Jewish experiences and connection for students on ten college campuses throughout the state of Michigan under the auspices of MSU Hillel.

Hillel Day School

We inspire a passion for learning, responsibility and community — and devotion to Jewish living — in a warm and engaging environment for all Jewish families wishing to provide their children with an outstanding Jewish and general education.

Hillel of Metro Detroit

We provide students on college campuses in and around Detroit with inspired Jewish programming that creates memorable experiences and helps them build their individual Jewish identities.

University of Michigan Hillel

We provide important Judaic programming and help create the next generation of American Jewish leaders through Jewish programming and facilitation of student groups representing a diverse spectrum of approaches to Jewish life.

Israel & Overseas Programs

We build our local community connection to Israel, fund and help implement overseas designated projects and participate in the collective support for world Jewry.



Jewish Agency for Israel

We ensure the future of a connected, committed global Jewish people with a strong Israel at its center by rescuing and resettling new immigrants, connecting the global Jewish family to Israel, social activism and strengthening Jewish identity among young Israelis.

Jewish Community Center

We build and strengthen Metro Detroit's entire community by providing programs that enhance Jewish continuity and identity in such areas as health, recreation, education, cultural arts and camping.

Jewish Community Relations Council/AJC

We tell Israel's and the Jewish community's stories through the news media, educating and mobilizing our community's activists and building important relationships with our non-Jewish neighbors.



Jewish Family Service

We provide services for those most in need, helping uninsured adults receive healthcare, families avoid foreclosure, older adults age with dignity and households meet needs as basic as food and shelter.

Jewish Senior Life

We are dedicated to enhancing the quality of life for the older Jewish adults in our community through programs and services that support aging with dignity, choice and independence.

JVS Human Services

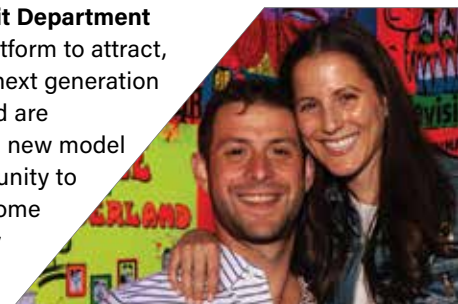
We help those with and without disabilities meet life challenges affecting their self-sufficiency through counseling, training and support services in accordance with the Jewish values of equal opportunity, compassion and responsibility.

Michigan State University Hillel

We continue to build dynamic Jewish life on the MSU campus and develop the next generation of Jewish leaders with Judaism-inspired programs, initiatives and activities that create memorable experiences.

JFMD NEXTGen Detroit Department

We are Federation's platform to attract, engage and retain the next generation of Jewish Detroiters and are continuing to develop a new model to transform our community to make it a meaningful home for young Jews of every age and affiliation.



Tamarack Camps

We build a vibrant community by providing enriching Jewish camping experiences for children and families, respectful of financial ability.

World ORT

We are dedicated to the advancement of Jewish and other people all over the world and provide training and education so that communities learn to be self-sufficient through the use of state-of-the-art technology.

JFMD Women's Philanthropy Department

Connect women through volunteerism, engagement and philanthropy, and empowers them to meet the needs of the Jewish community and build a vibrant Jewish future in Detroit, in Israel and around the world. Women's Philanthropy's dynamic programming creates leaders, addresses needs and ensures a stronger tomorrow.

Yeshiva Beth Yehudah

We create future community and Jewish leaders by teaching our students love of Torah, love of Eretz Yisrael and a deep appreciation for the values of a Torah way of life.

Yeshivas Darchei Torah

We provide an exceptional Jewish and secular education for students while also teaching our children how to care for the public through a variety of programs and initiatives that focus on giving back to their community.



Yeshiva Gedolah of Greater Detroit

We educate the next generation of Jewish leaders in our community through a strong curriculum steeped in Jewish learning and tradition.

Thank You to Our Corporate Sponsors

**Burns &
Wilcox**

Kaufman
FINANCIAL GROUP

 **Huntington**

Platinum Sponsorship Level


**GREENLEAF[®]
TRUST**

**Wallside
Windows[®]**
WE CAN DO THAT. WE ARE THE FACTORY.

E H i M
Pharmacy Benefits. Managed.

 **JAMIE DANIELS
FOUNDATION**
A Children's Foundation Initiative

 **AFB HOSPITALITY
GROUP**

 **LevelOne[®]
BANK**

 **Orangetheory[®]
FITNESS**


**MAIN
STREET
BANK**

**COUZENS
LANSKY**
ATTORNEYS & COUNSELORS

EPIC[®]
KOSHER
MILK & HONEY


ADAT SHALOM
עדת שלום

Jaffe
JAFEE RAITT HEUER & WEISS
A Professional Corporation
Attorneys & Counselors

KeyBank 


**HUNTER PASTEUR
Homes**

WeatherGard

velofix[®]
Save Time. Ride More.



WAYNE STATE
School of Medicine

 **maddin hauser**
Maddin Hauser Wartell Roth & Heller PC
attorneys and counselors

 **LARC**
Community Development Group



Gold Sponsorship Level

Silver Sponsorship Level



Bronze Sponsorship Level



Copper Sponsorship Level



6735 Telegraph Road
Bloomfield Hills, MI 48301-3143
jewishdetroit.org